

# Reel-to-Reel Print Solutions

Ink jet digital printing for rewinder and web finishing lines



application profile



# Ink Jet Digital Printing Solutions

A wide range of Domino ink jet solutions are available for integration on to leading industry rewinder and narrow web finishing lines. These enable simple ink jet numbering to complete label or ticket digital printing. Domino Editor GT controller solutions include intuitive data prep for externally supplied data and local data generation tools, plus interfaces for vision inspection and missing label detection.

## Key features

Solutions can include a range of functionality including:

- Numbering
- Barcode and 2D code printing
- Digital personalisation
- Games and promotions
- Inspection and missing label detection integration



## Ink Jet - Front

Domino offers a range of ink jet printers to meet requirements. In the example, K200 printers using UV curable ink are used for printing sequential barcodes typically required in a security label or ticket application.



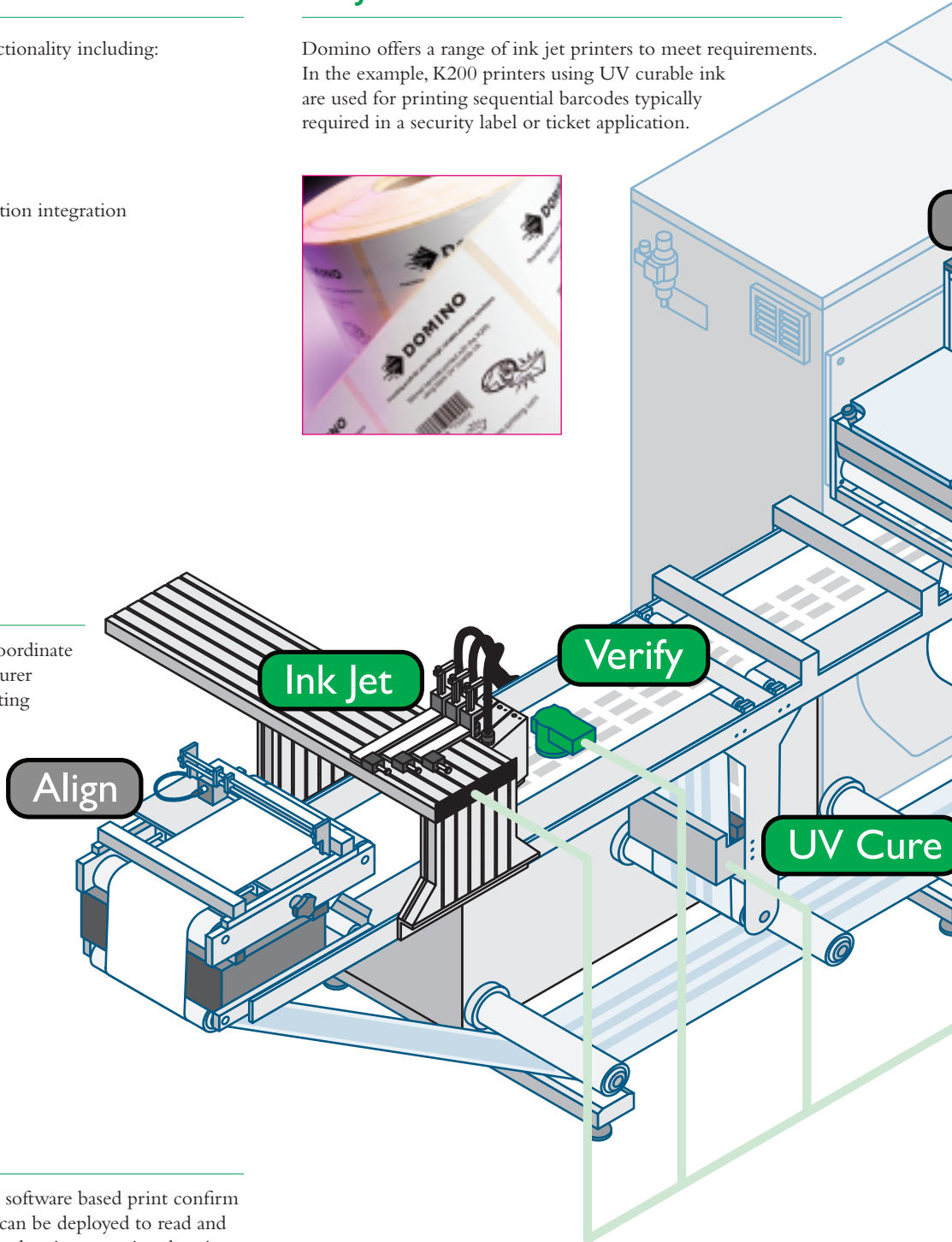
## Web Extension

Where it is required, Domino will coordinate with the relevant rewinder manufacturer to supply a web extension to an existing rewinder.



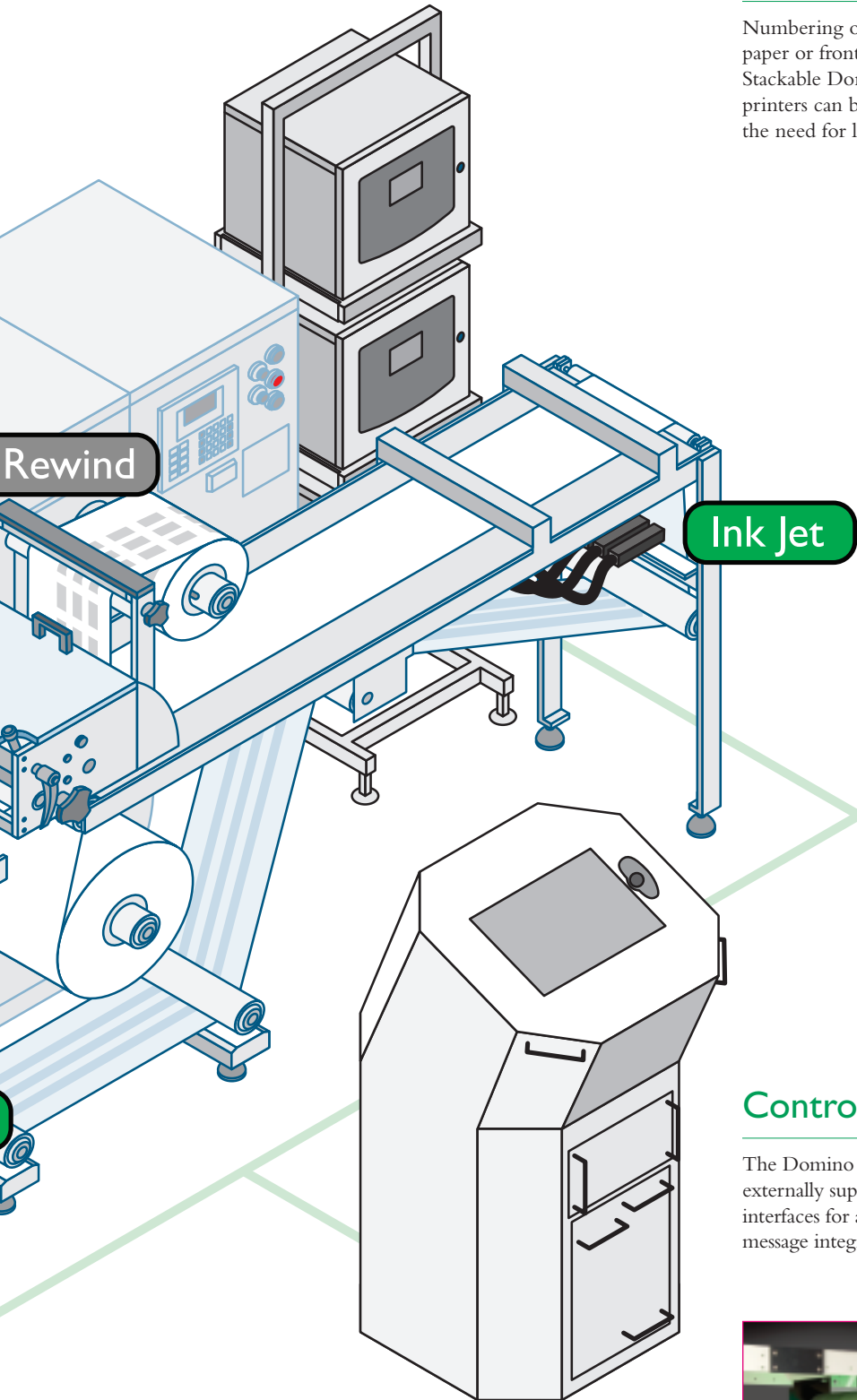
## Verify

Domino controller solutions include software based print confirm as standard. A separate vision system can be deployed to read and confirm numbering sequence or complete images printed against stored masters.



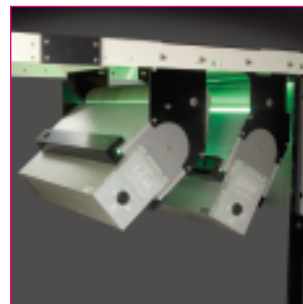
## Ink Jet – Back Numbering

Numbering on the backing paper or front of the label. Stackable Domino A400 printers can be used without the need for line modifications.



## Controller

The Domino Editor GT controller is a modular solution; providing externally supplied data setup as well as data creation tools, interfaces for a wide range of ink jet printers, control to ensure message integrity and interfaces for line control functionality.



## UV, IR and NIR Curing and Drying

Depending on the ink jet technology utilised, post print UV curing or IR/NIR drying technology may be integrated.

# Ink Jet Options

Different ink jet technologies can be deployed depending on application requirements ranging from numbering to multiple print heads printing a stitched image across the whole web.

## Print Capabilities

- Sequential numbering
- Cut and Stack numbering
- Security numbering
- Barcode printing
- 2D code printing
- Label personalisation
- Language variants
- Variable graphics
- Games and promotions



Please refer to the relevant separate printer product literature for full specifications.

## Printer Range

### A400

Stand alone operation for numbering tasks. Multiple print heads can also be controlled by the Editor GT ensuring number sequences remain in-step across the web. Commonly used for back numbering in pharmaceutical applications. Unique to Domino, high quality Freeform and micro-print Pinpoint options are available.

### K200

The piezo ink jet printer can use either high impact UV curable, or low volatile solvent inks. Multiple print heads can be ganged together for stitching larger images. Utilised for barcode and 2D code traceability in security label applications where high print quality needs to match pre-printed flexo.

### KI50

Cost-effective, piezo, drop on demand printer including UV curable and low volatile solvent ink options.

### Bitjet+

High speed, versatile printer that is suitable for a wide range of substrates.

### L400

The Domino L400 is based on Lexmark thermal ink jet technology. Disposable cartridge or bulk ink tank fluid supply options. High quality printing is combined with leading edge print speeds and simple maintenance.

	A400	K200	KI50	Bitjet+	L400
Print Height	1-4 lines	61mm (2.4")	^ 71mm (2.8")	54mm (2.13")	51mm (2.0")
Stitchable	X	✓	X	X	✓
Print Speed*	270m/m (890ft/m)	90m/m (290ft/m)	90m/m (290ft/m)	400m/m (1,300ft/m)	125m/m (420ft/m)
Print Resolution	N/A	316dpi	^ 180dpi	120dpi	600dpi
Substrates - Paper	✓	✓	✓	✓	✓
- Aqueous coatings	✓	Range	Range	✓	Range
- PE / PP	✓	Range	Range	✓	Range
- UV coatings	✓	X	X	✓	X
Curer / Dryer Required	X	~ Optional	~ Optional	X	Optional
Ink colours	Various	Various	Various	Black/Red/Green	Various
Text / Numbering	✓	✓	✓	✓	✓
Barcodes	Limited	Various	Various	Various	Various
2D Codes	Limited	Various	Various	Various	Various
Graphics	X	✓	✓	✓	✓

\* Typical print speeds, some printers will run faster/slower depending on print resolution selected

~ UV curer required with UV curable ink type but IR/NIR dryer is optional for solvent inks

^ KI50VR variant print resolution is dependent on variable print area setting selected

# Line Controller

The Domino Editor GT controller includes powerful data handling capability, support for a wide range of ink jet printers, and standard machine interfaces as well as line control functionality.

## Ink Jet Control

Editor GT includes software based print confirm feedback from all Domino printers. This ensures that the correct messages are printed and for multiple printers message sequence is maintained.

## Camera System

Where a higher level of verification is required; OCR, barcode or 2D code readers can be integrated with the Editor GT to read and confirm printed codes. Alternatively a vision system can be deployed to verify complete images against stored masters.

## Numbering Module

For more powerful numbering applications, where the Editor GT is used to generate cut and stack or fan-fold sequences, a powerful Numbering Module is available. This includes an on screen graphical tool for sequence setup and production job confirmation.

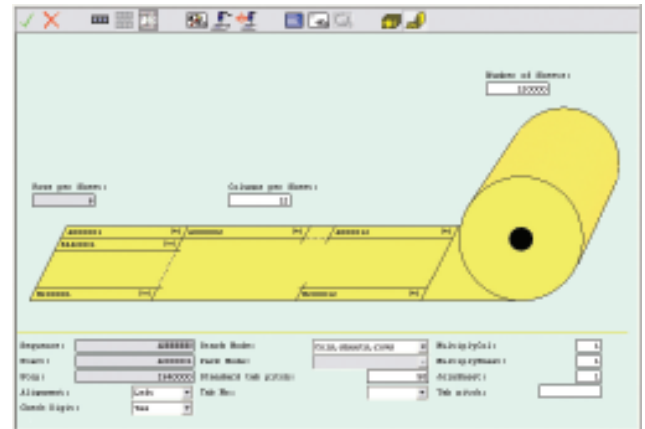
## Missing Label Detection

Where a missing label is identified, the Editor GT is able to stop the print sequence in order to minimise the waste product that needs to be spliced out from the reel. A range of print sequence options is available in the event a missing label is detected.



## Rewinder Manufacturers

Domino has experience of working with most leading rewinder manufacturer equipment, including: AB Graphics, Arpeco, Flytec, GMG, Prati and Rotoflex.

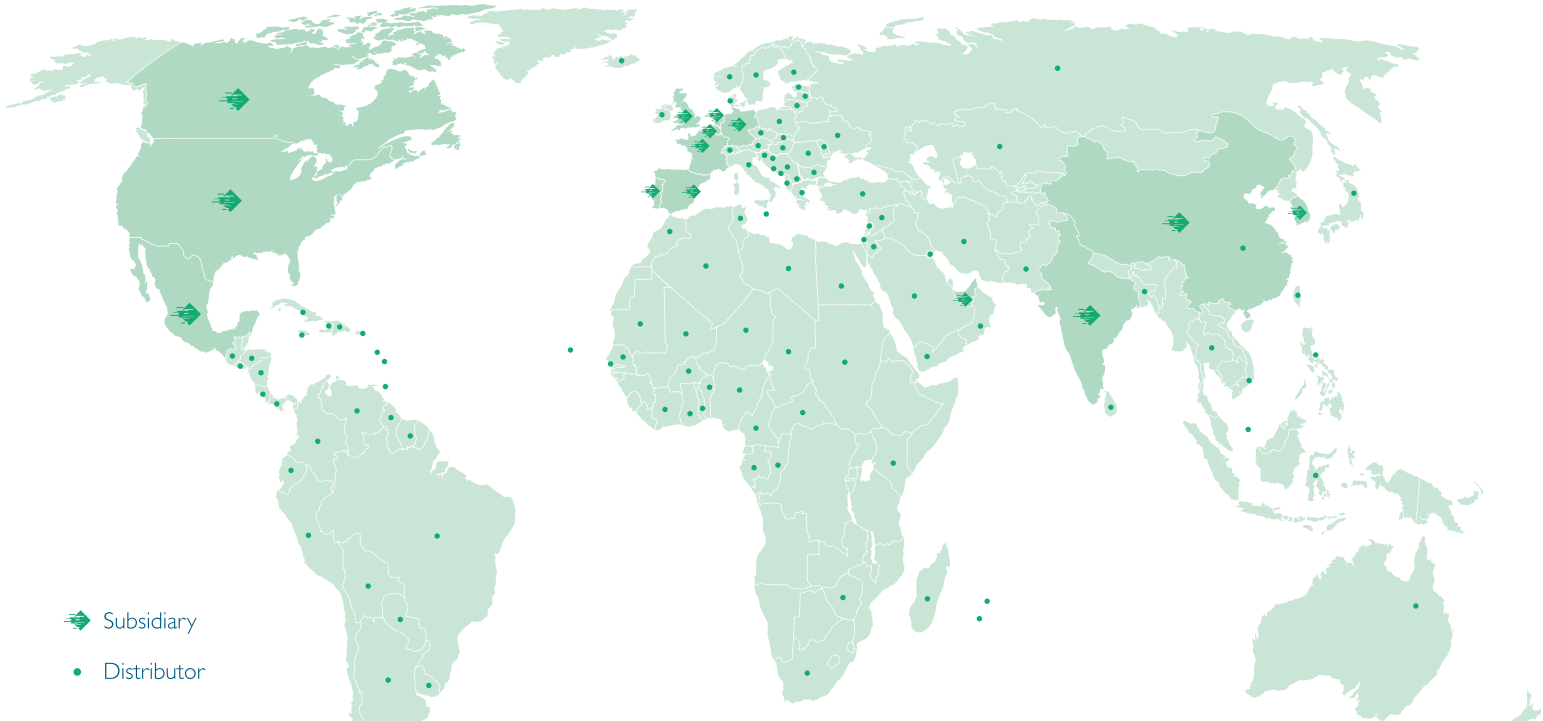


## Project Management

Domino assigns technical project managers to both vet the pre-order and then manage the post-order installation process. This will include where required, confirming available machine interfaces with the relevant line manufacturer, and handling the complete installation and commissioning process leading to final system training and handover.



# DOMINO WORLDWIDE



- ◆ Subsidiary
- Distributor

Through an extensive global network of subsidiaries and distributors, Domino operates in over 120 countries. This network offers customers both sales support and access to highly skilled service teams, providing technical support packages to suit the varying production environments and customer requirements across the world.

## BELGIUM

Domino Benelux  
Uitbreidingstraat 84/3  
B-2600 Berchem  
Belgium  
Tel: +32 (0)3 218 2028

## CANADA

Domino Printing Solutions Inc.  
2751 Coventry Road  
Oakville  
Ontario  
L6H 5V9  
Tel: + 1 800 387 7972

## CHINA

Domino Coding Ltd.  
No. 1150 Yun Qiao Road  
Jin Qiao Export  
Processing Zone  
Pudong  
Shanghai 201206  
Tel: + 86 21 5050 9999

## FRANCE

Domino SAS  
ZA du Bel Air  
2 Rue Mege Mouries  
78120 Rambouillet  
Tel: + 33 1 3046 5678

## GERMANY

Domino Deutschland GmbH  
Lorenz-Schott-Strasse 3  
55252 Mainz-Kastel  
Tel: + 49 61 34 25 050

## INDIA

Domino Printech India  
Private Limited  
167, Udyog Vihar Phase I,  
H.S.I.D.C Gurgaon -  
122016 Haryana  
Tel: + 91 124 400 7406

## MEXICO

Domino Printing México  
SA de CV  
Calle 3 No. 47 Local 6F Col.  
Industrial Naucalpan  
53370 Edo. De México  
Tel: + 52 55 5576 7979

## NETHERLANDS

Domino Benelux  
Ambachtsweg 8  
3991 LH Houten  
Tel: + 31 30 636 3333

## PORTUGAL

Marque TDI  
Zona Industrial da Maia, Sector X  
Complexo Empresarial Soconorte  
Armazém L  
4475-279 Maia  
Tel: + 35 122 986 6660

## SOUTH KOREA

Domino Korea Pte Ltd.  
1st-3rd Floor  
Rich Town Building  
#694 Bokjeong-dong,  
Sujeong-gu,  
Seongnam-city, Gyeonggi-do  
461-200  
Tel: + 82 2 797 1811

## SPAIN

Domino Amjet Ibérica S.A.  
Avenida Fuente Nueva No 14  
28700 S.S. de los Reyes  
Madrid  
Tel: + 34 91 654 2141

## UNITED ARAB EMIRATES

Domino UK Ltd  
P.O. Box 16984  
Jebel Ali Free Zone  
Dubai  
U.A.E.  
Tel: + 971 4 88 35003

## UNITED KINGDOM

Domino UK Ltd.  
Bar Hill  
Cambridge  
CB23 8TU  
Tel: + 44 1954 782 551

## UNITED STATES OF AMERICA

Domino Amjet, Inc.  
1290 Lakeside Drive  
Gurnee  
Illinois 60031  
Tel: + 1 800 486 7414



RRPS/0909

[www.domino-printing.com](http://www.domino-printing.com)

Due to our policy of continuous improvement, specifications are subject to change without notice. E&OE.