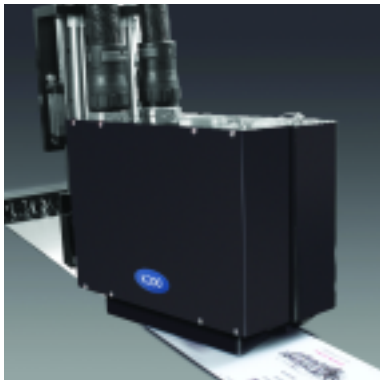


K200

High resolution, high performance ink jet printing system



data sheet

K200 Digital Ink Jet Printer

Domino's K200 is the flagship product in the drop on demand printer range and sets new standards in terms of print resolution and speed of operation.

The K200 digital printer offers in-line digital ink jet printing to complement your existing offset or flexo printed product with part personalisation, printing numbers, graphics, barcodes and addresses. Through the use of the innovative software stitching technology, seamless single image composition can be achieved from multiple print heads. This makes full page or web personalisation possible. Common applications include in-line printing on narrow webs, plastic cards and direct mail.



K200 printer with the intuitive Domino Editor GT Windows XP based controller for data manipulation and system setup. Can be configured with rack (as shown) or in desktop configuration.

Print Performance

Vertical resolution (perpendicular to the material travel direction) is fixed at 316dpi. Running speed will determine the maximum horizontal resolution (in the material travel direction). Refer to the table for performance settings.

Horizontal Resolution	Vertical Resolution	Max Speed		Image	
		(m/min)	(ft/min)	Ht.(mm)	Ht.(inch)
520dpi	316dpi	59	190	61	2.4
421dpi	316dpi	72	235	61	2.4
316dpi	316dpi	96	315	61	2.4
210dpi	316dpi	145	445	61	2.4
105dpi	316dpi	290	950	61	2.4

Modular Design

In order to maximise uptime in the unlikely event of failure, the print head is designed to clip in and out of the K-Series Base Station for quick replacement and recovery.

A compact rack based K-Series Base Station electronics unit (up to eight base station units per system), controls each K200 print head, and may be located in either the controller enclosure (as opposite), in a separate stand alone enclosure (as below) either one or two high or integrated within a production line.



Base Station and ink system enclosure

Ease of Use

Start Up

Print ready can be achieved within five minutes, and job changeover is possible within seconds.

Print Head Purging

With print head mounting brackets including magnetic locators, moving between off-line purging and printer ready position can be achieved effortlessly for fast make ready.

Electronic Stitching

With the K200 rombus print head configuration, set at a 71.6 degree angle, print heads can be located next to each other in the same plane in order to create a single stitched image from two or more print heads creating a total image area of 122mm with two print heads and 183mm with three etc. In the case of multiple print head solutions, the Editor GT electronic stitching capability simplifies print set up configuration enabling each print position to be configured quickly and accurately.



122mm (4.8") print swathe printed at 421 x 316dpi including electronic image stitching with two print heads

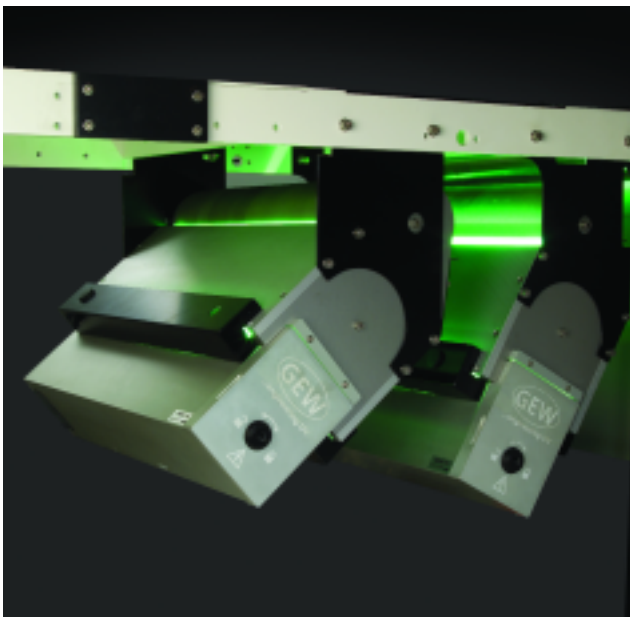
Ink Types

Depending on substrate, each system is either configured with:

- Versatile, easy to use UV-curable inks for printing on a wide range of porous and non-porous substrates including plastic, foil and coated paper
- Low-VOC solvent inks for printing on porous and semi-porous substrates are available on request
- Cost-effective oil based inks for porous substrates such as uncoated paper are available on request

In the UV-curable ink range, a range of coloured inks is available. In addition to cyan, yellow, magenta and black a range of spot colours can be produced through a colour matching service and the provision of the appropriate mixing recipe.

UV curing systems (as below) are custom designed for given applications. IR drying systems are also available.



UV Curing System

Unparalleled Control Capability from the Domino Editor GT

At the centre of Domino's digital printing solutions is an intuitive Windows XP PC-based control system - the Editor GT. This Controller facilitates data manipulation and controls a wide range of Domino printers including the K-Series (K100 and K200) Bitjet+, JetArray and single jet A-Series printers. This broad range of printer control enables you to meet both today's and tomorrow's requirements. Through Editor GT Tracker upgrades, multi-position matched printing, camera read, print and then verify, stacked numbering sequences, selective feeder control and mail sort requirements can all be facilitated.

Refer to the separate Domino Editor GT literature for details of the full range of capabilities.



Bar Hill
Cambridge

ADR_Line 1
ADR_Line 2
ADR_Line 3
ADR_Line 4
ADR_Line 5

Rec No. 00000044

61 x 200mm 316dpi
Black UV Curable Ink



Data Matrix
Code

Arial 12pt
Arial 10pt
Arial 8pt
Arial 6pt

Rotate the Box



AB123456789

K200

61mm (2.4") print swathe printed at 316 x 316dpi allowing for production speeds up to 96 metres per minute

Representation of print quality only, final quality is dependent on substrate and printer operating conditions

Technical Specification

General

- Fixed 61mm (2.4") image band per print head
- Print resolution is 316dpi across 61mm print swathe (vertically) and running speed dependent between 105 to 520dpi in the material travel direction (horizontally)
- Network TCP/IP link to Domino Editor GT or third party controller

Print Head

- Dimensions: 227mm (L) x 225mm (H) x 56mm (W)
8.9" (L) x 8.9" (H) x 2.2" (W)
- Conduit Length: 4m (13ft)
- 768 Individually addressable nozzles
- Maximum eight K200 print heads controlled from eight Base Stations
- Easily clips into Base Station
- Prints $\pm 1m$ (36") in elevation from Base Station
- Service exchange scheme or return and repair service

Base Station

- Locate in either Editor GT Medium controller rack, one or two up enclosures, or within mailing base
- One Base Station controls one K200 print head
- Base Station core electronics unit dimensions:
440mm (L) x 180mm (H) x 345mm (W)
17.3" (L) x 7.1" (H) x 13.6" (W)
- One up enclosure dimensions:
760mm (L) x 520mm (H) x 490mm (W)
29.9" (L) x 20.5" (H) x 19.3" (W)
- Two up enclosure dimensions:
760mm (L) x 700mm (H) x 490mm (W)
29.9" (L) x 27.6" (H) x 19.3" (W)
- Field replaceable components

General

- Housed within Editor GT Medium controller rack, or within separate Base Station enclosures
- Standard: Black, cyan, yellow and magenta UV curable inks
- Custom: Black slow dry solvent and oil (special conditions apply)
- Spot colour matching service

Ultraviolet (UV) and Infra Red (IR) Drying Systems

- Range to suit applications

Print Head

- 110VAC – 240VAC 50-60Hz auto ranging

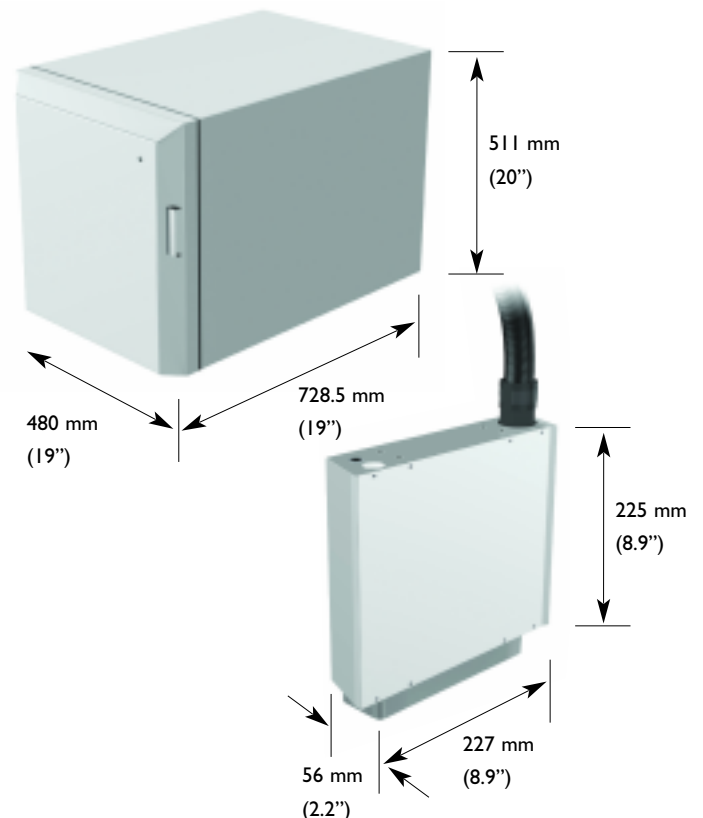
Base Station

Domino Editor GT Windows XP controller range supports:

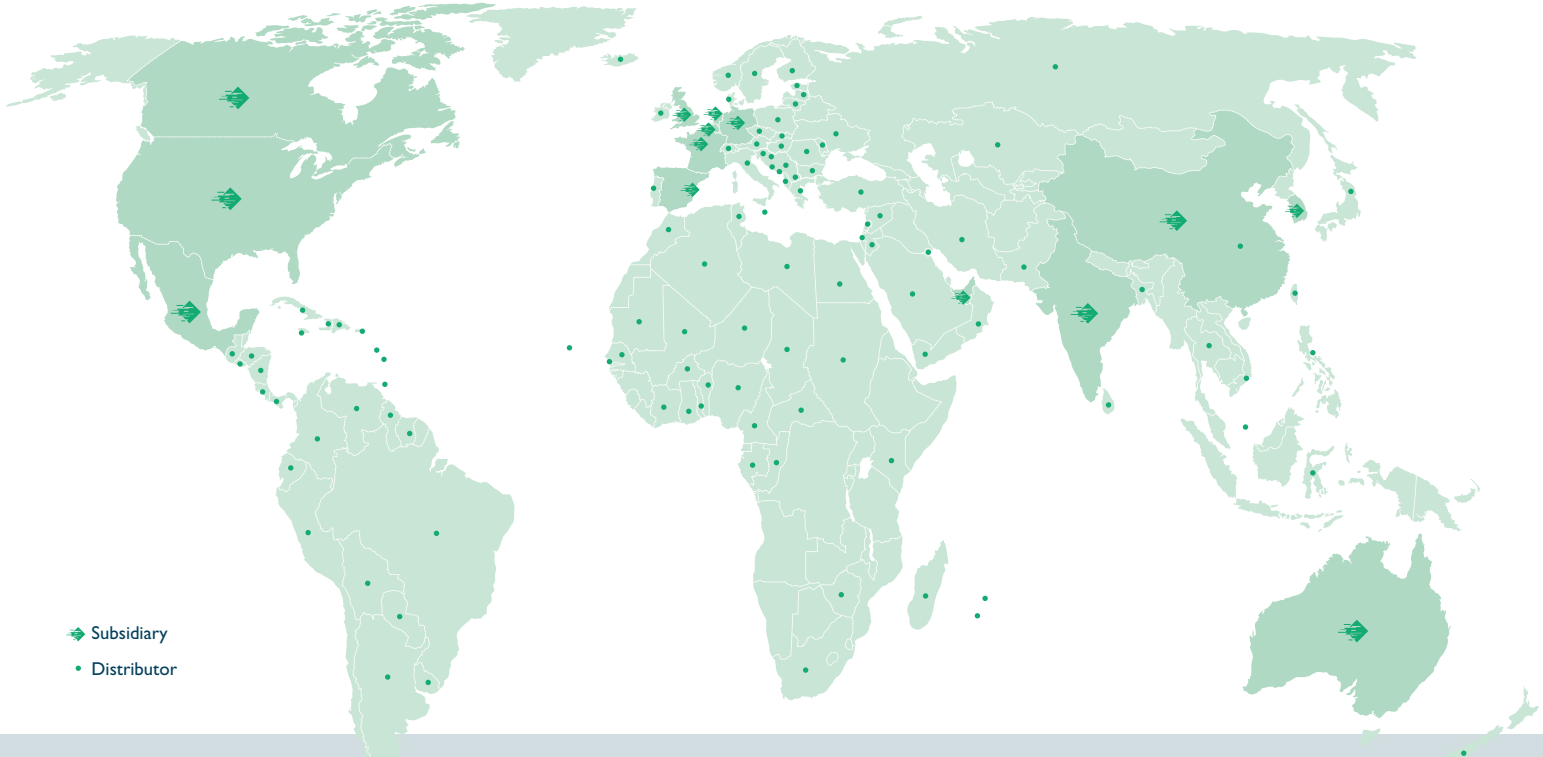
- Text – Adobe and Windows TrueType fonts
- Bitmap graphics – .bmp, .pcx, .tif, .jpg, .gif
- Barcodes – Code 39, Extended Code 39, Interleaved 2 of 5, POSTNET, PLANET, Four State, UPC/EAN
- 2D and Datamatrix barcodes
- Third party controllers utilising standard TCP/IP protocol

Accessories

- Shaft encoder plus mounting
- Fine adjustment print head mounting brackets



DOMINO WORLDWIDE



- ◆ Subsidiary
- Distributor

Through an extensive global network of subsidiaries and distributors, Domino operates in over 120 countries. This network offers customers both sales support and access to highly skilled service teams, providing technical support packages to suit the varying production environments and customer requirements across the world.

BELGIUM

Domino Benelux
 Uitbreidingstraat 84/3
 B-2600 Berchem
 Belgium
 Tel: +32 (0)3 218 2028

CANADA

Domino Printing Solutions Inc.
 2751 Coventry Road
 Oakville
 Ontario
 L6H 5V9
 Tel: + 1 800 387 7972

CHINA

Domino Coding Ltd.
 No. 1150 Yun Qiao Road
 Jin Qiao Export
 Processing Zone
 Pudong
 Shanghai 201206
 Tel: + 86 21 5050 9999

FRANCE

Domino SAS
 ZA du Bel Air
 2 Rue Mege Mouries
 78120 Rambouillet
 Tel: + 33 1 3046 5678

GERMANY

Domino Deutschland GmbH
 Lorenz-Schott-Strasse 3
 55252 Mainz-Kastel
 Tel: + 49 61 34 25 050

INDIA

Domino Printech India Private Limited
 167, Udyog Vihar Phase I,
 H.S.I.D.C Gurgaon -
 122016 Haryana
 Tel: + 91 124 400 7406

MEXICO

Domino Printing México SA de CV
 Calle 3 No. 47 Local 6F Col.
 Industrial Naucalpan
 53370 Edo. De México
 Tel: + 52 55 5576 7979

NETHERLANDS

Domino Benelux
 Ambachtsweg 8
 3991 LH Houten
 Tel: + 31 30 636 3333

PORTUGAL

Marque TDI
 Zona Industrial da Maia, Sector X
 Complexo Empresarial Soconorte
 Armazém L
 4475-279 Maia
 Tel: + 35 122 986 6660

SOUTH KOREA

Domino Korea Pte Ltd.
 1st-3rd Floor
 Rich Town Building
 #694 Bokjeong-dong,
 Sujeong-gu,
 Seongnam-city, Gyeonggi-do
 461-200
 Tel: + 82 2 797 1811

SPAIN

Domino Amjet Ibérica S.A.
 Avenida Fuente Nueva No 14
 28700 S.S. de los Reyes
 Madrid
 Tel: + 34 91 654 2141

UNITED ARAB EMIRATES

Domino UK Ltd
 P.O. Box 16984
 Jebel Ali Free Zone
 Dubai
 U.A.E.
 Tel: + 971 4 88 35003

UNITED KINGDOM

Domino UK Ltd.
 Bar Hill
 Cambridge
 CB23 8TU
 Tel: + 44 1954 782 551

UNITED STATES OF AMERICA

Domino Amjet. Inc.
 1290 Lakeside Drive
 Gurnee
 Illinois 60031
 Tel: + 1 800 486 7414



www.domino-printing.com